

EMIQUON NATIONAL WILDLIFE REFUGE

REFUGE REGULATIONS

All activities are limited to day use only sunrise to sunset
(except as noted under the Hunting Section).

Public Access - All refuge land is open to public access in accordance with these refuge regulations. Refuge lands are open for public use activities from sunrise to sunset except as noted under the Hunting Section.

Motorized Vehicle Access - Motorized vehicles are allowed in existing parking areas only. Off-road vehicle use, including ATVs, is prohibited. The use of motorized boats is allowed at **no wake speed** on all refuge waters.

Alcohol - Possession or consumption is prohibited on refuge lands.

Fishing - Sport fishing is allowed on all refuge waters except during temporary seasonal closures for waterfowl sanctuary as posted. The use of bows or crossbows for fishing is prohibited. Public hunting areas are closed to fishing during the hunting seasons.

Hunting - Hunting of migratory birds, upland birds, upland game, deer and turkey is allowed in designated areas (see reverse). Furbearer hunting and trapping is prohibited. Illinois and refuge regulations apply. Access for hunting is permitted from **one hour before legal shooting time to one hour after sunset**. All hunting aids such as stands, blinds, or decoys must be removed at the end of each day's hunt. No hunting is permitted in double ditch area adjacent to Highway 97/78. We recommend 200 yard spacing between hunting parties. Approved, non-toxic shot must be used while hunting all species except deer. All migratory bird hunting on the refuge closes in accordance with published State waterfowl seasons. Refuge hunting is not open for the conservation order light goose season.

Wildlife Observation - Wildlife observation is allowed on all refuge lands except during temporary seasonal closures for waterfowl sanctuary as posted.

Nut, Berry and Mushroom Picking - Nut, berry, and mushroom picking is allowed on all refuge lands.

Camping/Fires - Camping, overnight use of the refuge, fires and fireworks are not permitted.



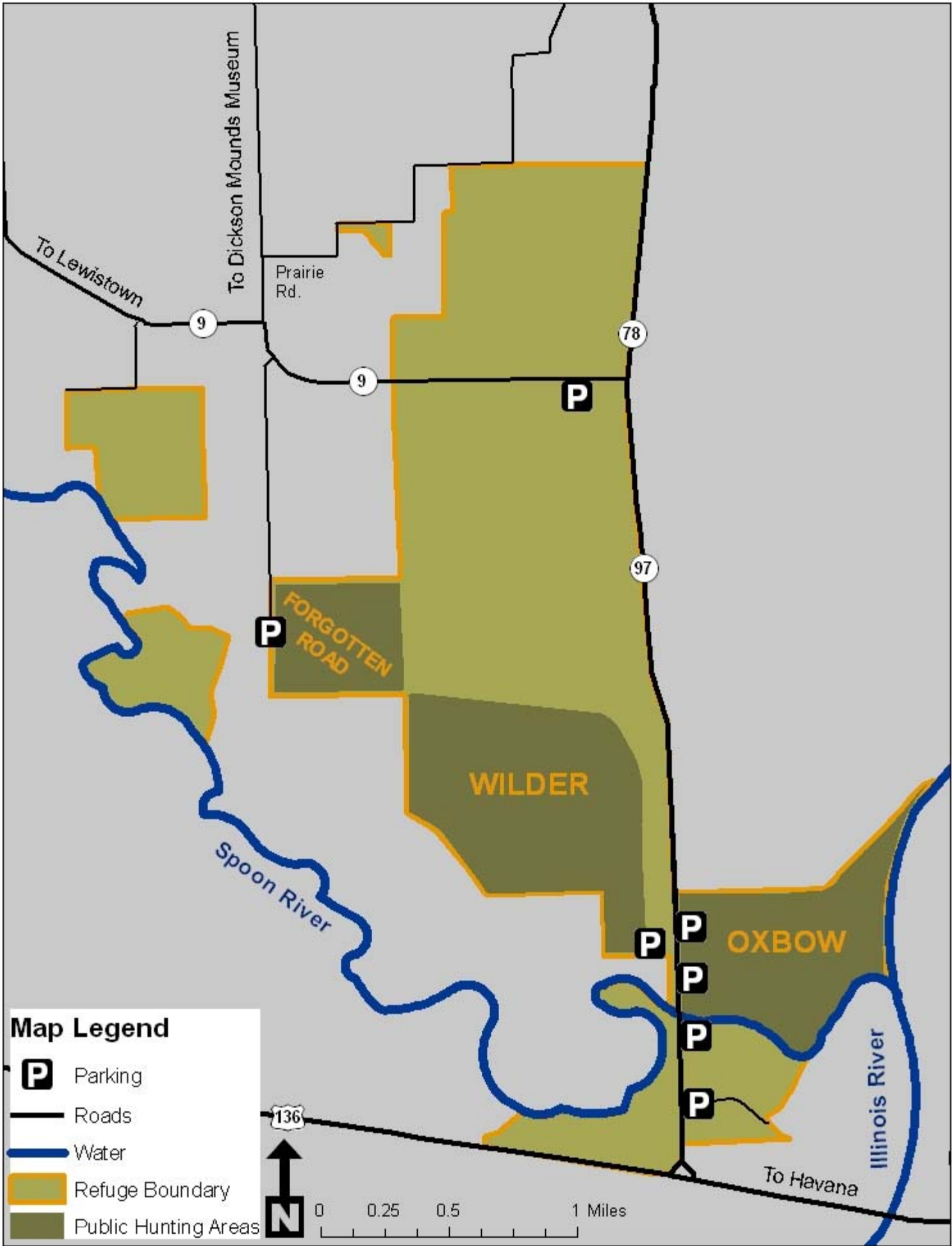
PETS MUST BE ON A LEASH UNLESS ENGAGED IN HUNTING

PLEASE DO NOT LITTER - IF YOU BRING IT IN, TAKE IT WITH YOU!

Illinois River National Wildlife & Fish Refuges
Emiquon National Wildlife Refuge
19031 E. County Road 2110 N
Havana, IL 62644

Telephone: 309/535-2290 FAX: 309/535-3023
Office hours: 7:30 AM to 4:00 PM

Rev. 10/2012



Map Legend

-  Parking
-  Roads
-  Water
-  Refuge Boundary
-  Public Hunting Areas

